

**Newcastle**  
**University**  
Medicine Malaysia

DULN005(J)



**STUDENT ACCOMMODATION**



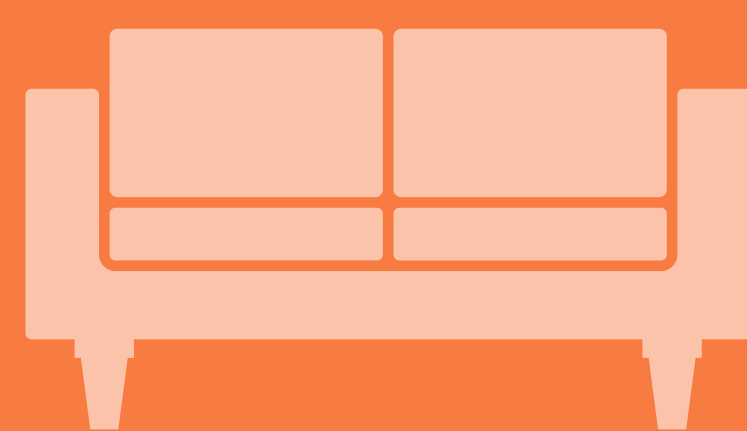
## BEDROOMS

**Two types of bedrooms are available:**

- **Single** (shared bathroom)
- **En Suite Sharing** (en suite bathroom)

**Bedrooms are equipped with:**

- Bed including mattress
- Desk and desk chairs
- Bookshelf (free-standing or part of desk)
- Wardrobe
- Bedside cabinet
- Wastepaper basket
- Mirror
- Table lamp
- Ceiling/Stand fan



## LIVING ROOMS

**Dining/Living rooms are equipped with:**

- Dining table with chairs
- Comfortable sofa
- Occasional table
- Kitchen hob and hood
- Refrigerator
- Washing machine and dryer
- Small goods (thermos, water purifier, microwave oven, iron and ironing board)
- Waste bin
- Water heater



## EXTRAS

**General provision:**

- Ceiling fans in living room and bedroom
- Lighting in all rooms and living, dining and kitchen area
- Shoe rack
- Curtains in all rooms and areas
- Air-conditioners in all bedrooms
- Access cards, access to all facilities in the apartment
- Car park with additional charge

NUMed Student Accommodation will cover up to RM 200 (Type D/E) and RM 300 (Type G) for electricity and water bills each month per apartment. Any additional charges will be billed to the apartment and the cost shared equally by the tenants.

All contracts take into account the main vacation periods, during which students will be able to leave their possessions in their rooms.

Interested students are required to pay a booking fee of RM3,000 to secure a placement at EcoNest Residence.

## ACCOMMODATION FEES

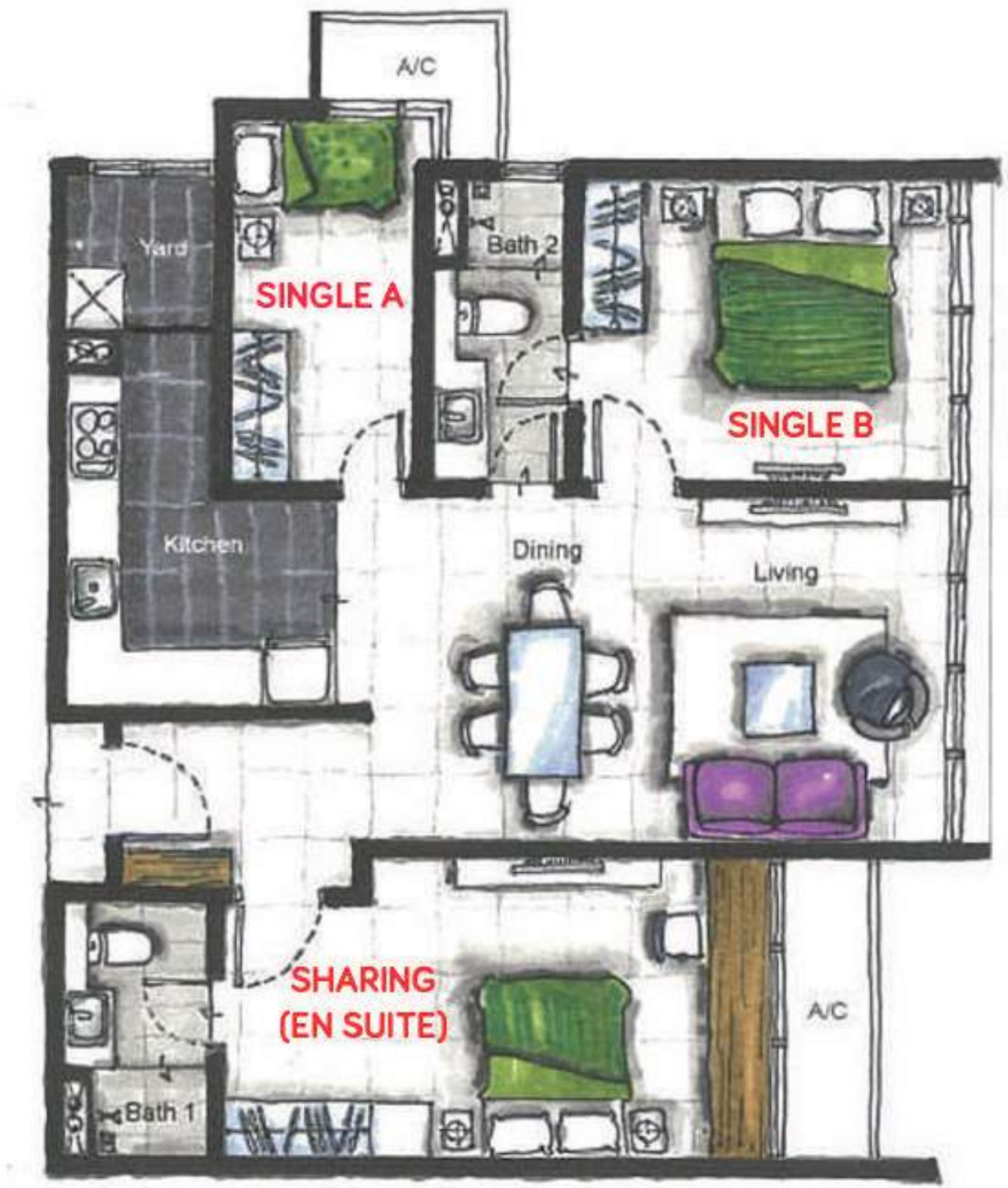
In line with other high-quality student self-catering accommodation in Malaysia, we have indicative prices for the accommodation in 2024/25

TYPE D			
Room Types	Single A 7.4m <sup>2</sup>	Single B 11.43m <sup>2</sup>	En Suite (Shared) 20.72m <sup>2</sup>
Foundation (47w)	RM14,194	RM17,202	RM12,408
Undergraduate (39w)	RM11,778	RM14,274	RM10,296

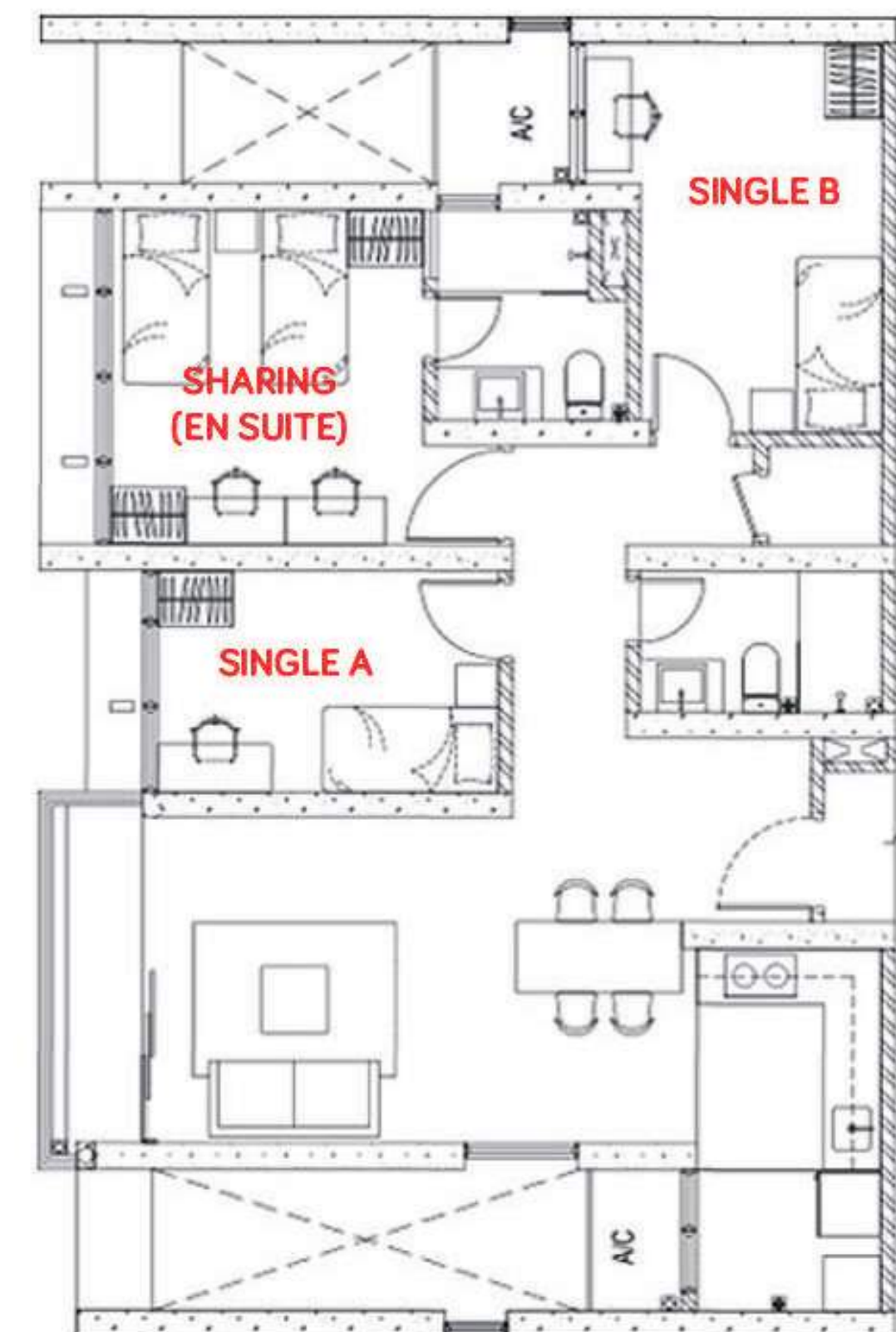
TYPE E			
Room Types	Single A 10.24m <sup>2</sup>	Single B 13.20m <sup>2</sup>	En Suite (Shared) 19.93m <sup>2</sup>
Foundation (47w)	RM16,591	RM18,142	RM12,408
Undergraduate (39w)	RM13,767	RM15,054	RM10,296

TYPE G			
Room Types	Single A 8.32m <sup>2</sup>	Single B 11.65m <sup>2</sup>	En Suite (Shared) 20.10m <sup>2</sup>
Foundation (47w)	RM15,792	RM17,390	RM12,408
Undergraduate (39w)	RM13,104	RM14,430	RM10,296

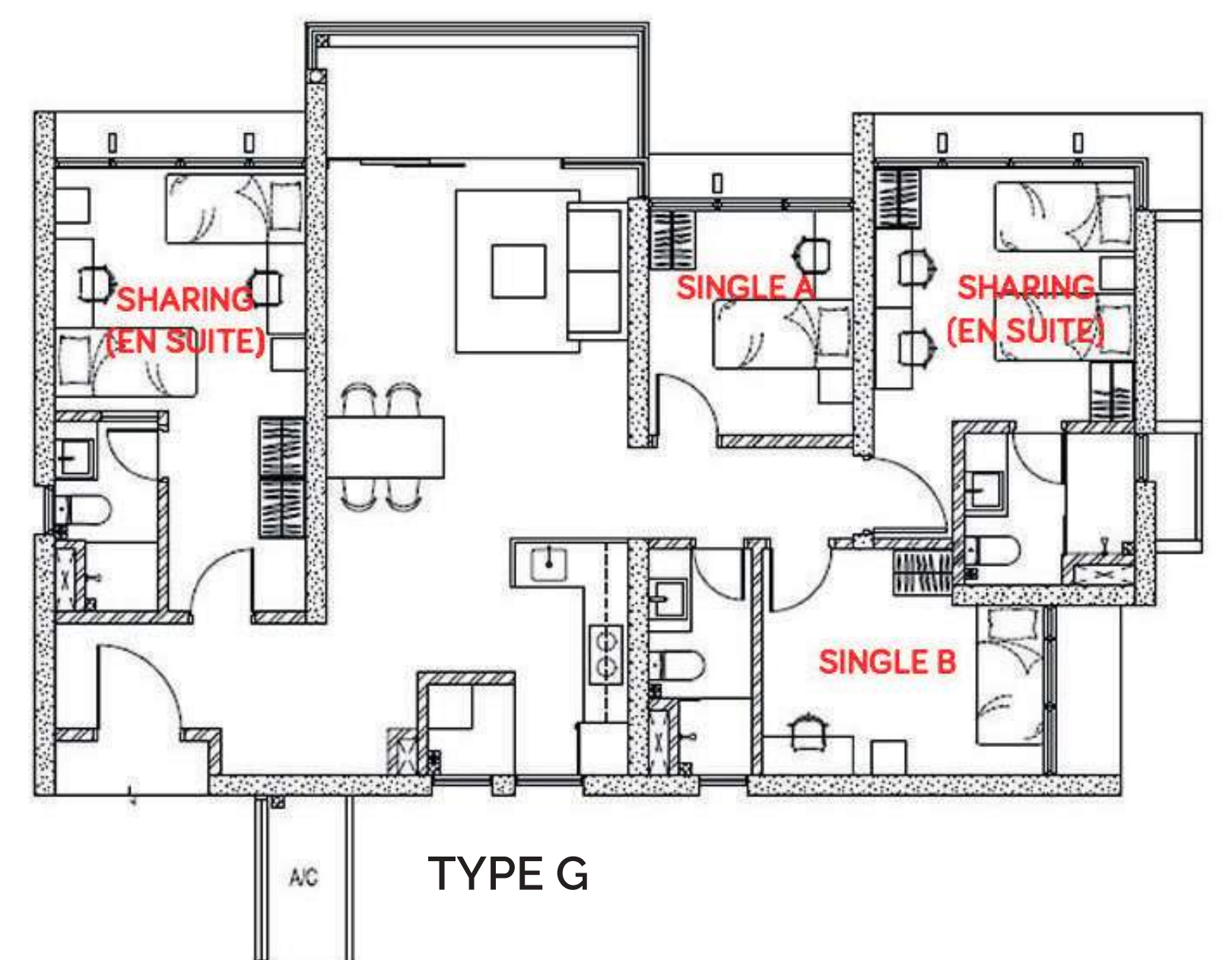
The accommodation fees for Foundation and undergraduate students are charged on 47 weeks and 39 weeks respectively  
*\*(subject to change according to term dates)*



TYPE D

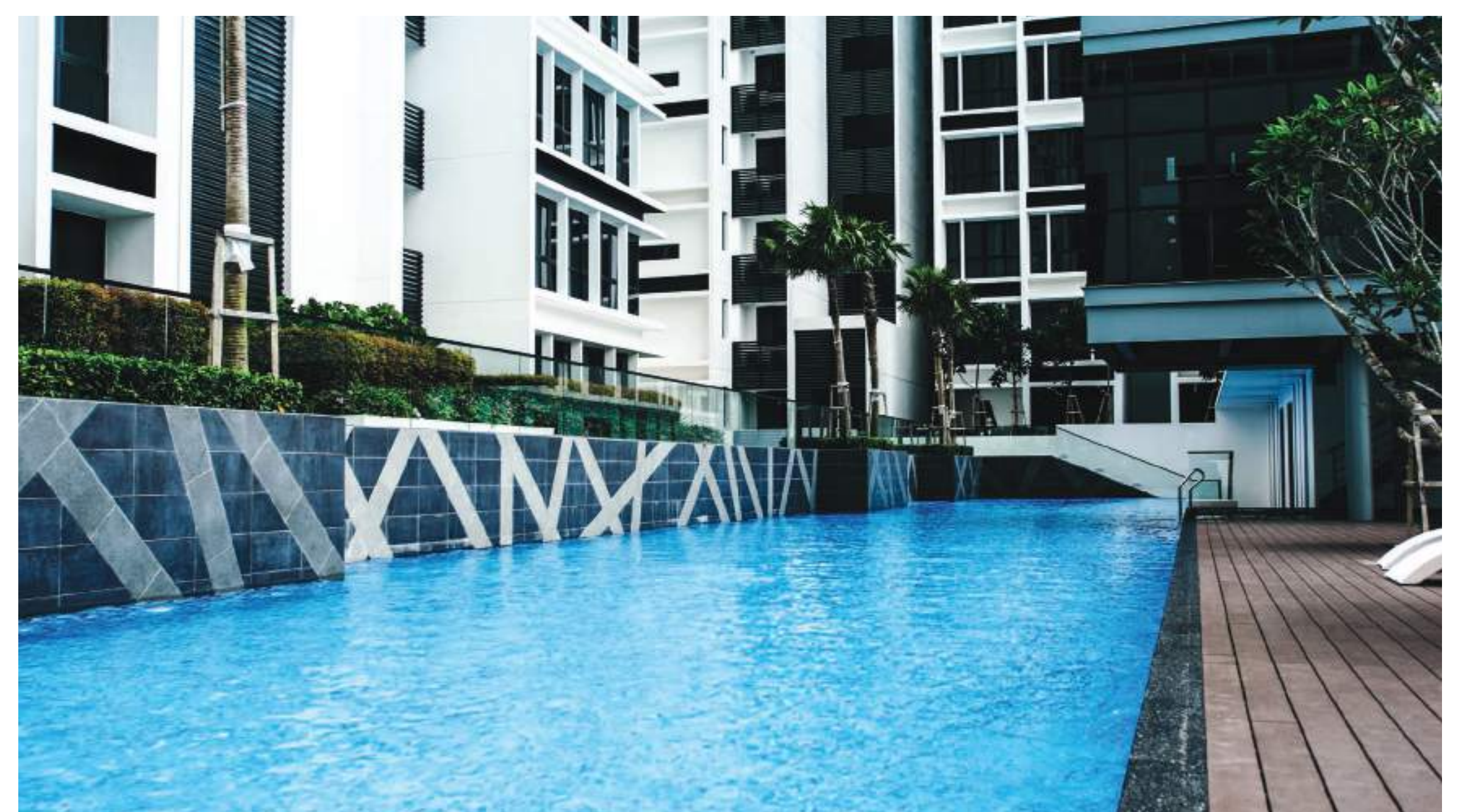


TYPE E



TYPE G

## LEISURE AND TRANSPORT



ECONest Residence offers facilities such as a swimming pool and gymnasium. There is also free shuttle bus service for transiting between the campus and accommodation.

The shuttle service operates from 8.00am - 6.40pm, five days a week and is a continuous service throughout the academic year.

**Contact us for further information**

Newcastle University Medicine Malaysia DULN005(U)

No 1, Jalan Sarjana 1, Kota Ilmu

EduCity@Iskandar, 79200 Iskandar Puteri

Johor, Malaysia

 [admissions@newcastle.edu.my](mailto:admissions@newcastle.edu.my)  +607-5553800

 /NewcastleUniversityMedicineMalaysia  [www.newcastle.edu.my](http://www.newcastle.edu.my)